

Reunions 2025

CANNON DIAL ELM CLUB

Friends,

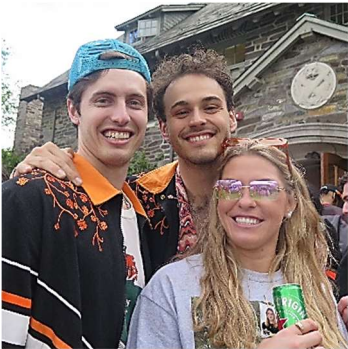
Thanks to all of you who stopped by the club this weekend!



The club sparkled both inside and out, especially outside. New fencing and landscaping out back provided a quiet spot to relax while the beautiful lawn and picnic tables provided spread-out space for the capacity crowd. The party on our front lawn after the P-rade featured an amazing spread, and a great band that drew many alums to dance. Around 5:30, the gathering was monumental as alumni from the Class of 2020 and onward descended on us after their hours-long wait to march in the P-rade. At times, the line for food stretched back into the Crane room. However, none of the over 2000 folks who came left hungry.

The P-rade weather was perfect, and the small dose of liquid sunshine around 6:30 did nothing to dampen the spirit of our alumni. After tents closed on campus, the young alumni returned to Cannon to party in the basement until almost sunrise.

After graduation, the club will regroup and begin some improvements. Over the summer, student study spaces and IT facilities will be upgraded. Before you know it, football weekends will return. We hope you will plan to VISIT THE CLUB AFTER A GAME OR TWO! A visit to the tap room after the game is always a great way to close out a day regardless of the final score.



We will also be ratcheting up preparations for our major construction project in 2026, which we have been calling **Thrive in '25!** This significant expansion of our dining room and kitchen is **absolutely necessary** to accommodate our current members, and they are extremely excited about it. **But we need your help to do it.**

Thanks to a few major donors and many, many smaller ones we are almost 60% to our goal of \$1.5 million. We are so appreciative of your early support. **But 60% of the money will not get us out of the ground! We need to raise the other \$650,000 by the end of this year.** It's really not a big number if all 5000+ of our Cannon, Dial Lodge, Elm, DEC and CDE alumni make even a small contribution.

So, whether or not you came back to Cannon Dial Elm this year, we are most urgently asking for your support now. The QR code to the right will link you directly to our **Thrive** Donation page, or use the handy donation form below and return it to us with a check or credit card details. Whatever way suits you best, no gift is too small or too big!

SCAN FOR MORE INFO



Please help now while you think about Princeton, Reunions and Cannon Dial Elm.

Thanks,

A stylized, handwritten signature in black ink, appearing to read 'CF' or similar initials.

Chuck Freyer '69
Chairman



Thrive in '25

To make a contribution to the Thrive in '25 campaign, please return this form to:
Cannon Dial Elm Club PO Box 7788 Princeton, NJ 08543-7788

Contributions may also be made online at cannonclub.com/donate/, by [venmo @cannonclub](#), or via the Princeton Prospect Foundation at princetonprospectfoundation.org/donate/ designating Cannon Dial Elm Club as recipient

☐ This gift is in honor/memory of:

Please inform the family/honoree of the gift.
Their name and address:

☐ A check made payable to Princeton Cannon Dial Elm Foundation is enclosed

☐ Please charge my (circle one) American Express / Mastercard / Visa card for \$ _____

Your name / Name on card

Card #: _____

Exp. Date: _____ Security Code: _____

Signature